

Community Forestry Management Plan
2016-2020

Borough of Sea Girt, Monmouth County
New Jersey



Borough Hall

PO Box 296
321 Baltimore Boulevard
Sea Girt, NJ 08750
732-449-9433
Fax: 732-974-8296

Borough Administrator: Lorraine Carafa

Prepared by:

Shelterwood Forest Managers, LLC
William F. Brash Jr.
New Jersey Approved Consulting Forester
New Jersey Certified Tree Expert (CTE# 375)

May 2016

Table of Contents

Table of Contents	2
1. Community Information Form	3
2. Introduction	4
o Existing Forestry Management	4
o Mission Statement	5
o Goals and Objectives	5-6
o Tree Hazard and Liability Statement	6-7
3. Community Overview	7-8
4. Community Forestry Program Administration.....	9-10
5. Community Map	11
6. Training Plan	12
7. Public Education, Awareness and Outreach	13
8. Statement of Shade Tree Budget	13
9. Statement of Plan Implementation	14
o Tree Inventory/Assessment	14
o Hazard Tree Identification.....	14
o Tree Planting	14
o Tree Maintenance and Care.....	14
10. Community Stewardship Incentive Program (CSIP)	15-16
11. Plan Amendments.....	17
APPENDICES	
12. Appendix A Shade Tree Ordinance	19-26

Municipal/County Information Form

Municipality: Sea Girt Borough

County: Monmouth

Address: Borough Hall, PO Box 296 321 Baltimore Blvd, Sea Girt, NJ 08750

Contact Name and Title: Lorraine Carafa, Borough Administrator

Phone #: 732.449.9433

Fax # and E-mail: 732.984.8296

Organization Name: Sea Girt Shade Tree Commission

Mayor/County Freeholder's Signature: _____

Date of Management Plan Submission: 2016

Time Period Covered in Management Plan: 2016-2020

Community Stewardship
Incentive Program (CSIP)
Practices Identified in
Management Plan

- ☒ CSIP #1 Training
- ☒ CSIP #2 Community Forestry Ordinance Establishment
- ☒ CSIP #3 Public Education and Awareness
- ☒ CSIP #4 Arbor Day
- ☒ CSIP #5 Tree Inventory
- ☒ CSIP #6 Hazard Tree Assessment
- ☒ CSIP #7 Storm Damage Assessment
- ☒ CSIP #8 Tree Maintenance and Removals
- ☒ CSIP #9 Insect and Disease Management
- ☒ CSIP #10 Wildfire Protection
- ☒ CSIP #11 Tree Planting
- ☒ CSIP #12 Tree Recycling
- ☒ CSIP #13 Sidewalk Maintenance Problem
- ☒ CSIP #14 Stormwater Management
- ☒ CSIP #15 Other

**Official Use Only
Certification**

The above named municipality/county has made formal application to the New Jersey Forest Service. I am pleased to advise you that after our review, the NJ Forest Service has concluded that this plan meets the standards set forth by the State and the NJ Community Forestry Council and is approved for the period covered.

Signed _____

State Forester

Approved date _____

INTRODUCTION

Healthy trees are an asset to the Community. It is inevitable that as they mature, they will require care, maintenance and eventual replacement. Care and maintenance, in addition to *"planting the right tree in the right place"* can ensure that community trees not only contribute to the environmental and economic vitality of the town, but also reduce the potential hazards to public safety.

The implementation of this plan will stimulate the public's appreciation for trees and the knowledgeable but voluntary protection of trees on private lands for the benefit of the entire community.

This Community Forestry Management Plan demonstrates that Sea Girt Borough is devoting reasonable levels of resources in a planned manner to reduce the number of tree related accidents thereby, reducing its exposure to liabilities and increasing public safety.

EXISTING FORESTRY MANAGEMENT

Sea Girt Borough's Community Forest management program consists of a Partnership of the Borough Administrator, the Public Works Department and the Shade Tree Commission. Contractor services are sometimes utilized as required based upon the specific conditions. Trees that are cut down or pruned and chipped are recycled through firewood or chips.

Resident complaints/concerns are reviewed by the Borough Administrator and the Public Works Department or their designee. Replacement plantings or new plantings in public open space and recreation areas are planned as recommended by staff, consultants or the public and considered as part of the operating budget for Public Works or Recreation Departments or as part of capital projects.

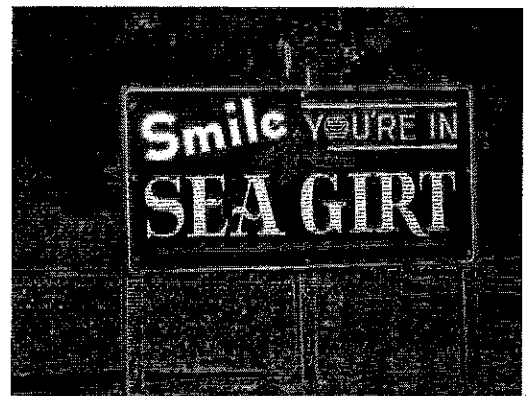
Species for all new plantings along Borough Roads are selected based upon a preferred species planting list found in the eCode as ordinance Chapter 91 Section 82. Existing soil and growing conditions are inspected prior to species selection.

A public works staff of 13 is available to perform basic tree maintenance and new tree installation.

The Borough has no formal systematic program for the inventory of street trees but has an interest to explore this option in the next 5-year plan.

Sea Girt Shade Tree Commission Web address:

<http://seagirtboro.com/shade-tree-commission/>



MISSION STATEMENT

To plant and maintain shade trees along our streets and within our parks and public spaces, in a manner that physically, economically and aesthetically benefits the community in the most effective manner possible.

GOALS AND OBJECTIVES

Preserving and protecting our trees and forests is necessary to preserve and protect the quality of life in Sea Girt Borough. Our street trees and parks are not only habitat; they also serve to recharge critical groundwater supplies and can naturally help to regulate storm-water runoff.

The goals and objectives by which tree resources within the Borough of Sea Girt will be managed are detailed in the following sections. Short-term objectives and tasks are provided for the initial five-year management period 2011-2016. Each year accomplishments of the previous year will be evaluated and tasks for the following year will be adjusted, as necessary, to maintain progress toward the overall goals and objectives. At the end of each five-year management period, new short-term objectives and work tasks will be formulated for subsequent five-year periods.

These goals and objectives focus on trees within Borough open spaces, parks and other Borough-owned properties including street rights-of-way.

1. Develop an Updated Borough-wide Inventory System

- i. Objective 1: Complete i-tree training (2016-2020)
- i. Objective 2: Convert existing inventory to digital format. (2017)
- ii. Objective 3: Complete a sample inventory in all zones. (2017)

2. Develop an Improved Tree Management System

- i. Objective 1: Develop awareness and an accounting of the public/private tree loss to accurately determine net gain/loss of trees. Partner with the Construction Code Official to improve the understanding of the Borough's tree replacement ordinance. (2016)
- ii. Objective 2: Develop a plan to elevate trees adjacent to sidewalks in town.
- iii. Objective 3: Modify ordinances if needed to address the need for more trees. (2018)

3. Develop and Implement a Plan for Tree Maintenance

- i. Objective 1: Upon completion of the inventory develop and implement a pruning plan based on needs and priorities.(2016)

- ii. Objective 2: Train the STC and Borough-DPW staff on proper tree pruning, maintenance and planting techniques. (2016)
- iii. Objective 3: Develop an early tree care program, include follow-up to tree planting efforts annually over the life of this plan. (2016)
- iv. Address invasive species in the Borough's maritime forest park.

4. Become a Tree City USA Community

- i. Objective 1: Complete the requirements for Tree City USA status. (2017)
- ii. Objective 2: Complete and submit the Tree City USA application to the National Arbor Day Foundation (2016)
- iii. Objective 3: Establish and maintain Tree City USA status (2016-2020)

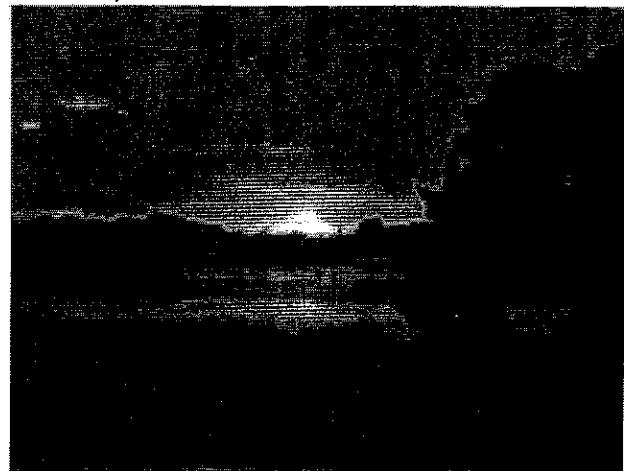
5. Update and Revise the Sea Girt Borough Preferred Tree Species List

- i. Objective 1: Develop and establish information on factsheets or the Borough website for "After Planting Tree Care". The following information will be included:
 - ☐ Tree Planting Information (2017)
 - ☐ Pruning Information (2018)
 - ☐ Mulching (2019)
 - ☐ Watering (2017)
- ii. Objective 2: Develop a specific "zone preferred" tree species list (2018)

TREE HAZARD AND LIABILITY STATEMENT

The Borough of Sea Girt recognizes the benefits provided to the community by its tree resources. As trees are living entities, it is inevitable that as they mature they require care, maintenance, removal and replacement. It is the intent of this plan to reduce tree hazards while creating a feeling of community through the proper care of the Borough's trees.

Since it is impossible to predict or prevent all hazardous conditions that may arise, Sea Girt is developing this plan to become more proactive in its tree maintenance program. Proactive tree management should reduce the occurrence of hazardous events. Following this plan will demonstrate commitment to proper tree management within the Borough's ROW and public lands.



ORDINANCES

Sea Girt's tree resource is governed by Chapter 2 and 13 in the General Code of Ordinances of the Borough of Sea Girt.

- Chapter 2: Article 7 2-46:1-5
 - Article 7: Powers of Shade Tree Commission Chapters 1-5
- Chapter 13 Property Maintenance
 - Article 2.2: Height of tree branches over curb and sidewalk.

The Borough of Sea Girt's tree ordinance can be accessed from their website at:

<http://clerkshq.com/default.aspx?clientsite=Seagirt-nj>

Tree Service Requests

- 1) Any calls regarding trees shall be screened by the Public Works Director or Supervisor in charge.
- 2) Tasks shall be assigned on a priority basis with safety being a primary concern.
- 3) Emergencies services shall be as need dictates.

COMMUNITY OVERVIEW

The Borough of Sea Girt is a picturesque community nestled along the Atlantic Ocean, commonly known as the town where "the cedars meet the sea". It is a well-developed residential community that maintains bathing beaches, five tennis courts, 1 paddle tennis court, and a quaint shopping district comprised of a variety of lovely shops and eateries.

Sea Girt is home to the NJ National Guard Training Center, a public library occupying the old railroad station and the restored Sea Girt Lighthouse.

Sea Girt is a premier summer resort community with a mile of sparkling beach, palatial summer homes, quaint inns and guest houses, and well-appointed year round homes.

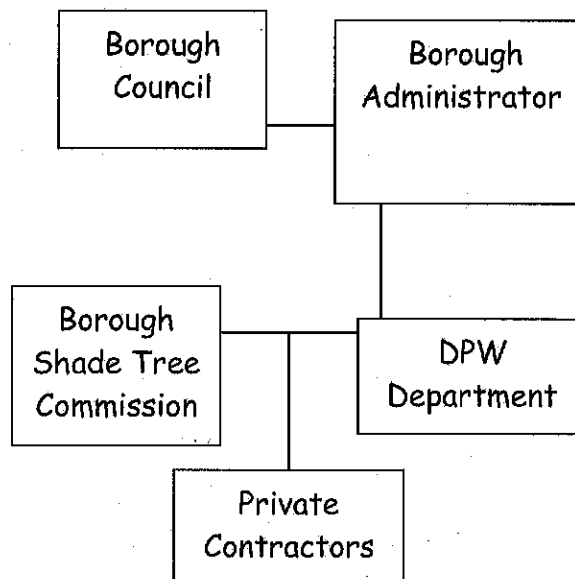
In the summer months, there is so much to do. Along with swimming, fishing and boating, there are many beautiful bicycle paths to explore, concerts on the boardwalk to enjoy, a five-mile run (first week in August), youth activity programs and much, much more. Notices of all these events are noted in the Borough calendar, posted on the Borough's web site, in the windows of the borough's shops along Washington Blvd, and on the community bulletin board located at the corners of Washington Blvd and The Plaza.

Sea Girt's inns and bed and breakfast establishments provide nearly year-round accommodations to the thousands of tourists who visit the Borough. The boardwalk in Sea Girt is ahas been identified as the longest, uninterrupted non-commercial boardwalk in the State of New Jersey and is used year-round by locals and visitors alike. Walkers and joggers can be seen at almost any hour utilizing the boardwalk.

Sea Girt had their Master Plan completed in 2010 before the Shade Tree Commission was operating at the capacity they are today. The Master Plan and the CFMP connect via the inventory needs of both the Shade Tree Commission and the town parks. The Inventory objective contained in the CFMP can accomplish the inventory need expressed in the Master Plan regarding Borough parks. The Goals and Objectives in the Conservation Element of the Master Plan concerning "maintaining appropriate balance between developed and undeveloped land " and the "protection" of the Borough's resources including the shade trees is a shared goal in both documents.

COMMUNITY FORESTRY PROGRAM ADMINISTRATION

The administration of Sea Girt Borough's Community Forestry Management Program is a cooperative effort of the Assistant Borough Administrator, the Public Works Department and the Shade Tree Commission as shown below:



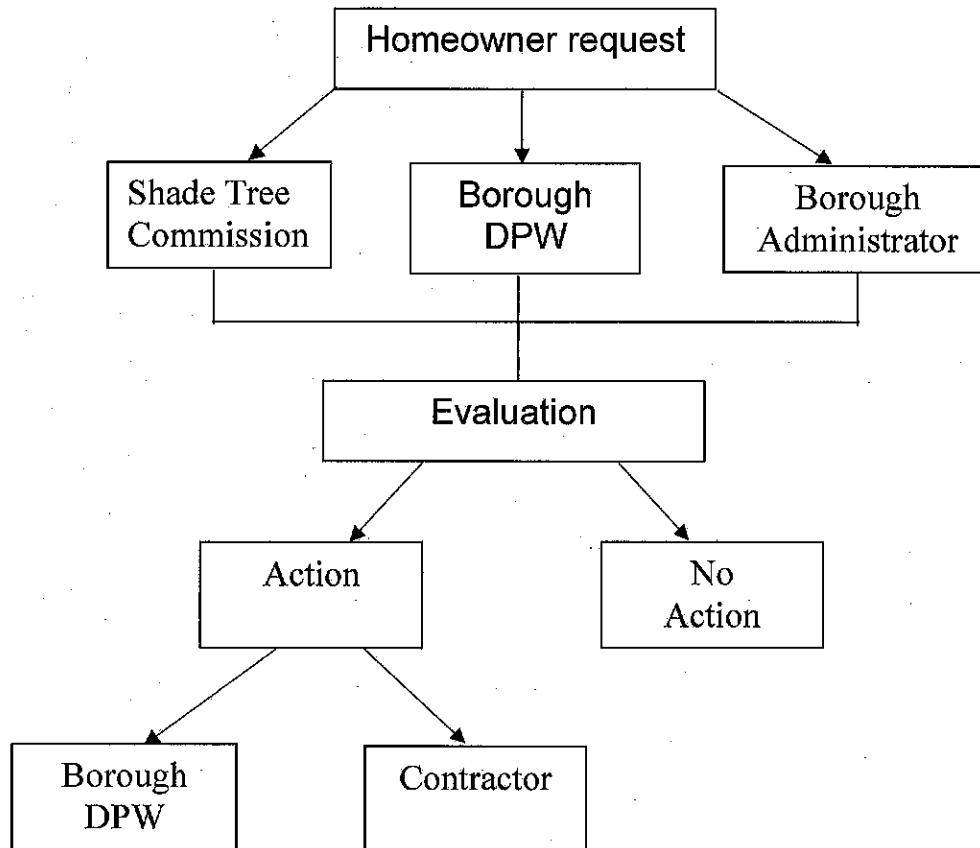
Borough Council

- a) The Borough Council annually appropriates budgets, as it deems necessary, to execute the Community Forestry Program.

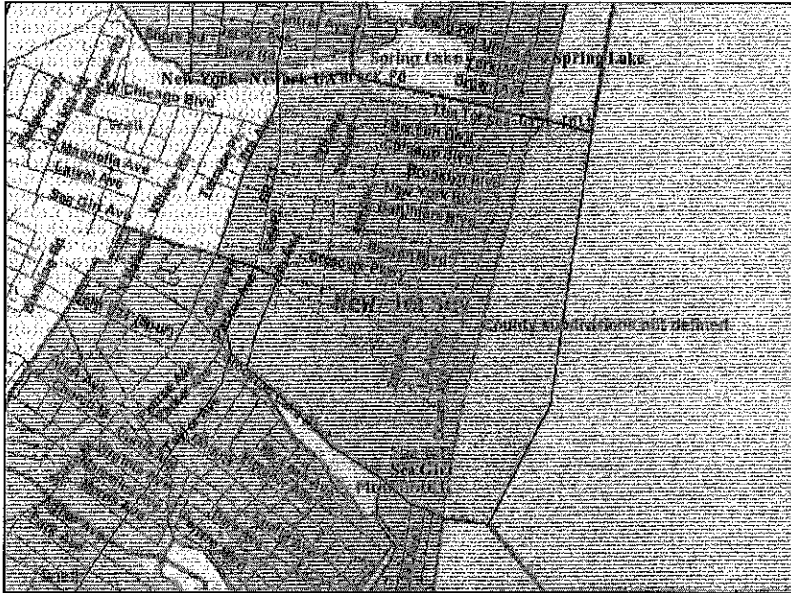
- b) Adopts new or revised regulations.
- 2) Borough Administrator
 - a) Coordinates Other Departments, Public Works and Shade Tree Commission.
 - b) Oversees and Manages all liaison relationships.
 - c) Coordinates new legislation with Borough Council.
- 3) Public Buildings, Grounds and Landscaping Committee
 - a) The Committee shall assist the Shade Tree Commission in reviewing existing regulations, develop new regulations, assist in planning for the planting and care of shade trees, ornamental trees and shrubbery located in any public park or parkway except those excluded due to higher public ownership.
 - b) Assist in developing long and short-term goals of the forestry management program.
 - c) Act as Community tree advocates for state/federal support.
 - d) Coordinate the preparation of the annual accomplishment report for review and approval of the Borough Council and the Community Forestry Council.
 - e) Submit grants to promote the goals and objectives contained in this plan.
- 4) Other Borough Departments
 - a) Assist as may be appropriate in the forestry management program to the extent that such assistance results in the implementation of Borough policies, procedures and ordinances that may relate to public or private trees.
- 5) Public Works
 - a) Prioritize work.
 - b) Plan and execute all tree pruning and removal work.
 - c) Insure all tree maintenance abides by all applicable Borough ordinances. Tree maintenance shall follow all current and accepted arboricultural standards and practices.
- 6) Property Owners
 - a) Are responsible for maintenance of street trees planted on private property.
 - b) Are required to abide by the Borough ordinances relating to the preservation and protection of trees.
 - c) Are required to water newly installed trees planted on their properties.
 - d) Shall be encouraged to properly care for trees on private property.
- 7) Utility Companies
 - a) Shall abide by all applicable Borough ordinances.

- b) Shall exercise reasonable diligence during the installation and maintenance of its facilities so as to avoid damage to trees.
- c) Shall follow all current and accepted arboricultural standards and practices.

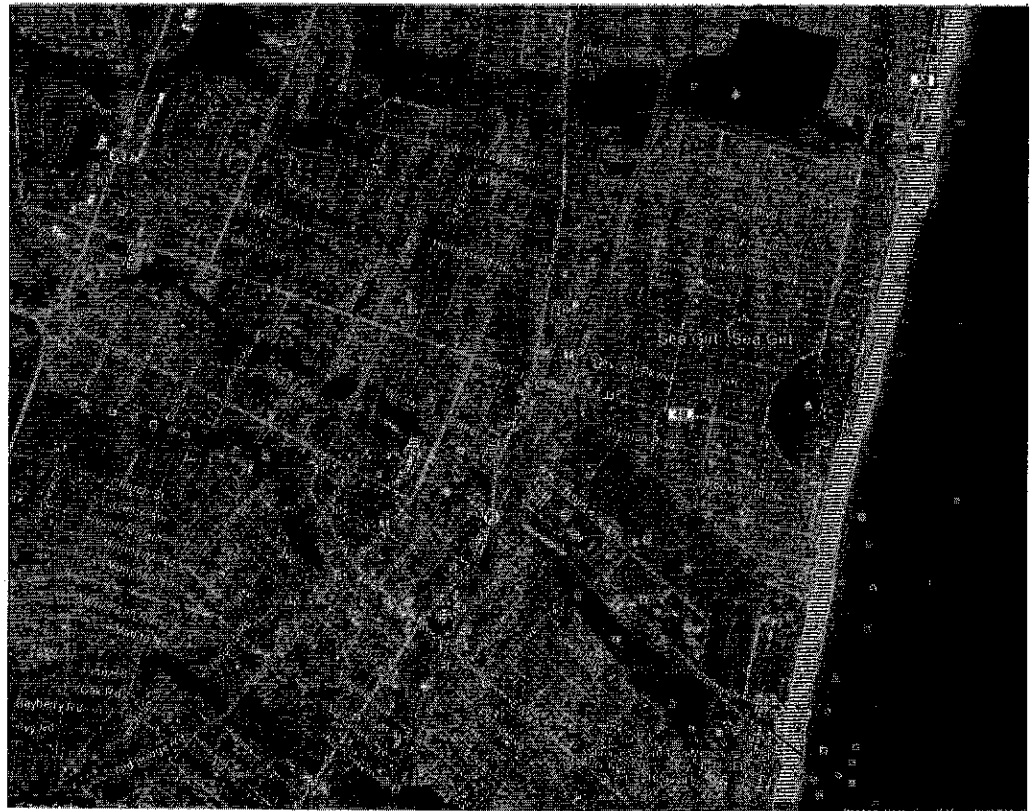
Tree Service Request Decision Tree



Sea Girt Boro Maps

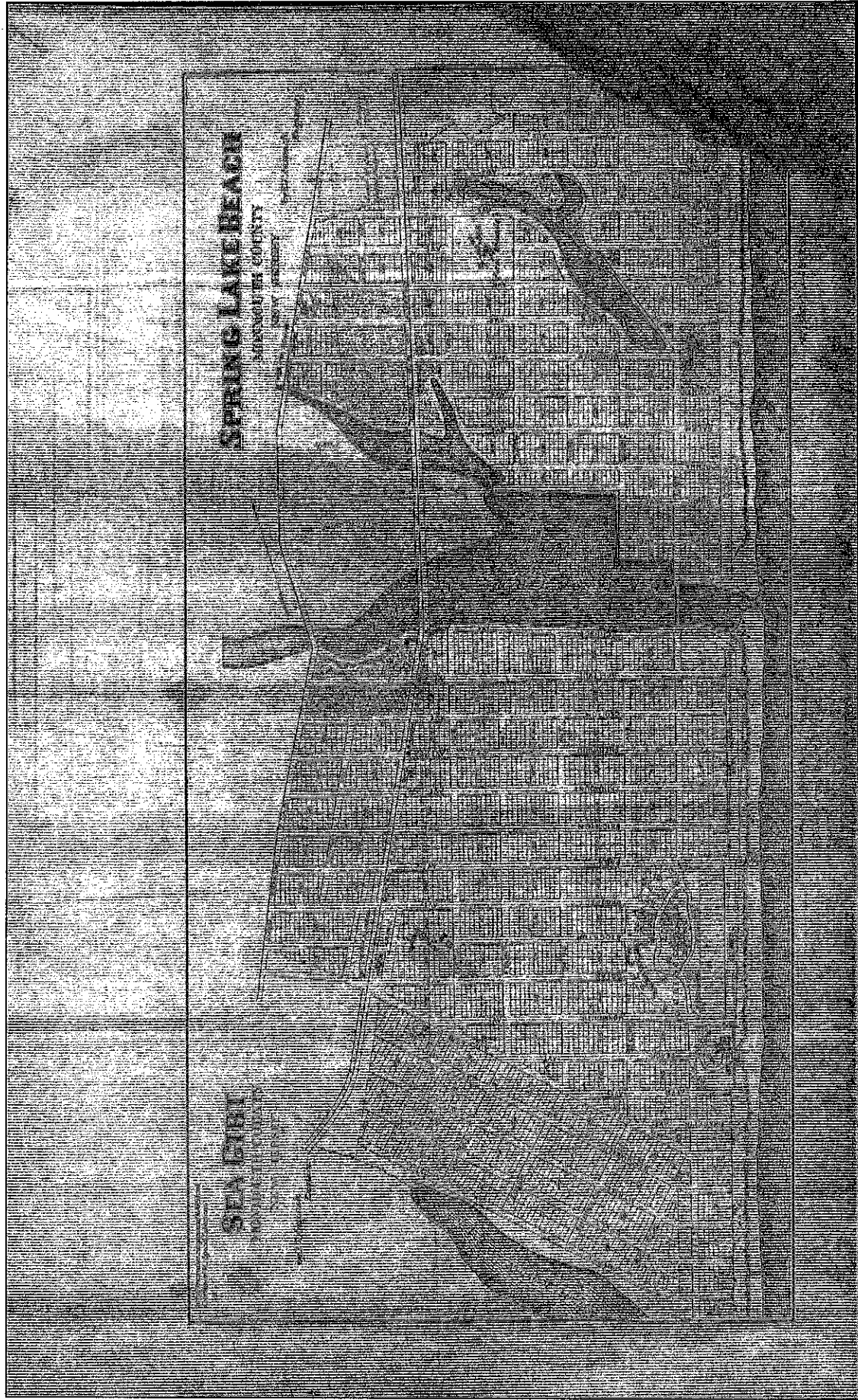


Sea Girt Borough
Street Map



Sea Girt Borough
Aerial Photo

COMMUNITY MAP



TRAINING PLAN

AND PROFESSIONAL DEVELOPMENT

Creating a properly trained team to meet the requirements of the Community Forestry Program is a long term goal. The Borough has identified that on-going or additional training is needed for tree hazard reduction, planting site analysis and updated preferred tree planting list and proper tree maintenance/ pruning procedures for homeowners.

Team members should be trained with sufficient knowledge in order to make technically sound resource decisions. Team members should stay involved and knowledgeable about standards and programs that will benefit the community forest. Training protocols will assist team members in satisfying Committee CORE training requirements, thereby satisfying the requirements of the NJ Shade Tree and Community Forestry Assistance Act, making the Borough eligible for Community Stewardship Incentive Program funding and immunity from liability under the Tort Claims provisions of the Act. The Borough has met the criteria for CORE training by having a Shade Tree Commission member and a public works staff member attend the Shade Tree Federation Meeting every year since 2010.

The Borough's budget will provide for continuing education for designated team members (Shade Tree Commission and a Public Works representative.) The Borough will utilize educational opportunities available through the Community Forestry Council, NJ Shade Tree Federation, Rutgers University, and others that are deemed appropriate to create continuing education (CEU) opportunities.

Training Objectives (pursuant to available funding) are:

- i. Train 2 or more designees on CORE issues including Tree Hazard evaluation.
(2016)
- ii. Provide for 2 more designees to meet criteria for Continuing Education Units (CEU's) (2016)
- iii. Have 2 more designees obtain training on tree maintenance/pruning techniques.
(on-going)

Sidewalk Maintenance: The Borough has some sidewalk issues with deflections and low branching trees requiring pruning. A digital inventory will identify and rank these issues for need.

Tree Recycling: Brush and leaves are collected and turned into mulch by a sub-contractor to the Borough.

Stormwater Management: The Borough has a Storm-water Management Plan and believes the planting of additional trees

Wildfire: Wildfire is not an issue which will be addressed in this management plan cycle.

PUBLIC EDUCATION, AWARENESS AND OUTREACH

Sea Girt Borough has actively attempted to stimulate public interest in tree activities via press releases with pictures and descriptions of the events.

Our goal is to implement a public education awareness program in order to encourage public participation in protecting public trees and encourage proper tree care on private property to benefit the entire community.

Public awareness objectives for 2016-2020 include:

- i. Implement the Tree City USA Program. (2016)
- ii. Initiate the Arbor Day program with tree planting for the Sea Girt Borough's two Elementary Schools (2016)
- iii. Revise and update tree ordinances to assist community in its endeavor to protect trees and woodlands. (2016)

BOROUGH SHADE TREE BUDGET 2015

COST DESCRIPTION	BUDGETED AMOUNT	NOTES	TOTAL
Tree Planting (Tree and labor costs)	\$17,200		\$17,200
Tree trimming, pruning and removals	\$1500	Rental of Bucket truck for removals	\$1500
Leaf and Brush Pick-up/Labor	\$30,500	Brush pick-up costs incurred over 50 day time period	\$30,500
Leaf and Brush Pick-up Equipment	\$7500	Brush pick-up costs incurred over 50 day time period	\$7500
151 Volunteer Hours X \$21.40/hour	N/A	Shade Tree Volunteer hours including meetings and inventory.	\$3,231.40
		Total	\$42,731.40

STATEMENT OF PLAN IMPLEMENTATION

Tree Inventory and Assessment: The Borough Shade Tree Commission believes the key to managing the resource is to update and convert their existing inventory to digital format and wish to take i-Tree training as soon as it is available. The Commission believes the size of the Borough and the capacity of the current members will be sufficient to update an inventory of all zones within this management cycle (5-years). iTree assessment and inventory tools will allow the Borough to become pro-active to catastrophic events that destroy trees like hurricanes, blizzards, ice storms, high winds and forest fire.

Hazard Tree Identification: Hazard tree ID is one of the criteria that will be inventoried and i-tree certainly emphasizes the importance of that function of any inventory. The Borough due to funding limits removes hazardous trees on a more or less periodic basis pursuant to a ranking system that puts the most hazardous trees at the top of the list. If the trees present a technical obstacle due to size or location a private contractor is brought in, "as needed"

Tree Planting: The Borough wishes to update its current preferred tree planting list to account for knowledge and understanding of tree cultivars developed since it was originally passed. The Committee knows that tree planting also has storm-water management benefits associated with increasing tree canopy like reduced runoff volumes and slower peaks. The Borough Shade Tree Commission understands that the; "right tree in the right spot" will also reduce sidewalk issues and that is important because the Borough has no sidewalk replacement program.

The Borough wishes to implement a tree planting program to increase canopy cover to 25% in the next 5-year planning period

Tree Maintenance and Care: The Shade Tree Commission understands the importance of proper tree maintenance and wishes to begin an early care pruning cycle on newly planted trees to prevent some costly pruning later in the trees life cycle.

1. Develop a Borough-wide digital Inventory System

- i. Objective 1: Complete i-tree training (2016)
- ii. Objective 2: Develop a Borough wide map zones for tree management purposes.
(2016)
- iii. Objective 3: Complete a partial inventory in all zones. (2017-2016)

2. Develop the Capacity of the Shade Tree Commission

- i. Objective 1: Develop and institutionalize a street/park tree mortality tally. (2017)
- ii. Objective 2: Develop and periodically review the funding balance for the tree replacement account (2016-2020)

3. Develop and Implement a Plan for Tree Maintenance

- i. Objective 1: Upon completion of the inventory develop and implement a pruning plan based on needs and priorities. (2017)
- ii. Objective 2: Train the STC and Borough-DPW staff on proper tree pruning techniques. (2017)
- iii. Objective 3: Develop an early pruning cycle program and prune all newly planted trees at years after planting. (2017-2016)

4. Become a Tree City USA Community

- i. Objective 1: Complete the requirements for Tree City USA status.(2016)
- ii. Objective 2: Complete and submit the Tree City USA application to the National Arbor Day Foundation (2016)
- ii. Objective 2: Establish and maintain Tree City USA status (2016-2020).

5. Update and Revise the Sea Girt Borough Preferred Tree Species List

- i. Objective 1: Develop and establish information on factsheets or the Borough website for "After Planting Tree Care". The following information will be included: (2019)

- ☐ Tree Planting Information
- ☐ Pruning Information
- ☐ Mulching
- ☐ Watering

Sea Girt Tree Canopy Cover:

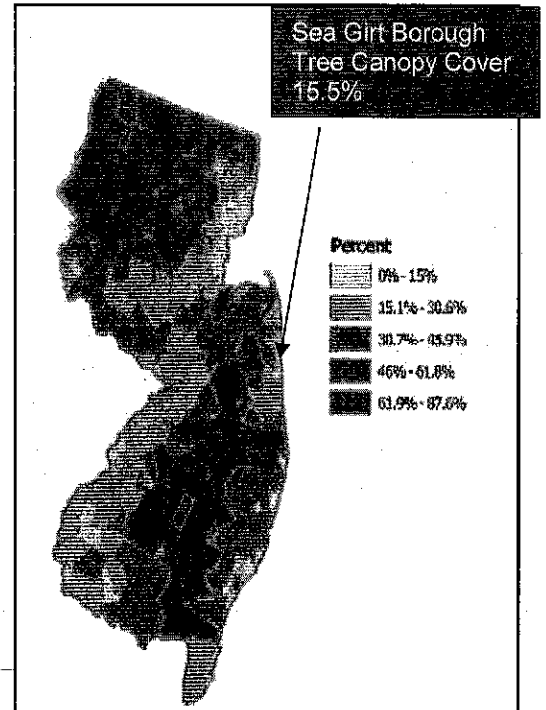
Sea Girt Borough currently has a tree canopy of 15.5%. Sea Girt is 1.45 square miles with a full 27% of the Borough or 0.393 square miles being water. As a result it is difficult if not impossible for Sea Girt to obtain the recommended 40% tree cover as recommended by American Forests. Sea Girt has a desire to increase the tree canopy to 25% within the Borough's public areas. With approximately 50,396 feet of roads (9.5 miles) this gives a rough street tree estimate of 2020 trees. Accounting for driveways, cross streets and vacancies we apply an adjustment factor of -.394 and arrive at a street tree estimate of 800+- trees.

800 (Existing Street Tree Population) = approximately 15.5% tree canopy.

15.5%	25%
800 trees	1290

1290 trees equals 25% tree canopy cover.

490 trees planted in the next 5-years (98 trees/year) gets Sea Girt Borough to 25% canopy cover.



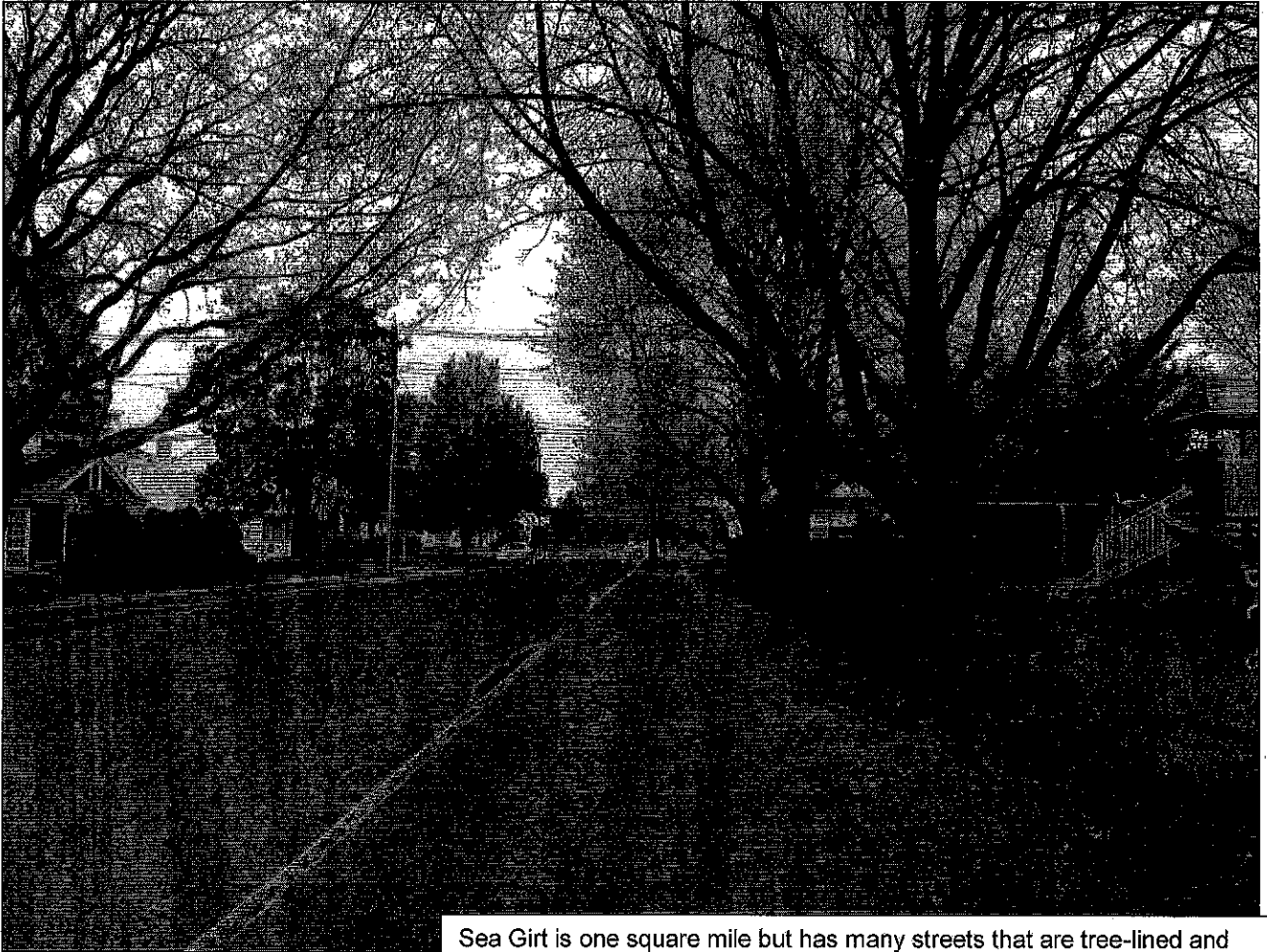
The following is a summary of how each of the thirteen Community Stewardship Incentive Program (CSIP) practices is addressed by this Community Forestry Management Plan.

COMMUNITY STEWARDSHIP INCENTIVE PROGRAM (CSIP)

The following is a summary of how each of the fifteen Community Stewardship Incentive Program (CSIP) practices is addressed by this Community Forestry Management Plan.

- **CSIP #1: Training**
This practice is addressed on pages 12, 14, 15.
- **CSIP #2: Community Forestry Ordinance Establishment**
This practice is addressed on page 7 and Appendix A.
- **CSIP #3: Public Education and Awareness**
This practice is addressed on pages 13, 14.
- **CSIP #4: Arbor Day**
This practice is addressed on pages 6, 13, 15.
- **CSIP #5: Tree Inventory**
This practice is addressed on page 16.
- **CSIP #6: Hazard Tree Assessment**
This practice is addressed on page 14.
- **CSIP #7: Storm Damage Assessment**
This practice is addressed on page 14.
- **CSIP #8: Tree Maintenance and Removals**
This practice is addressed on pages 6-7.
- **CSIP #9 Insect and Disease Management**
This practice is addressed on pages 16-17.
- **CSIP #10: Wildfire Protection**
This practice is addressed on page 14.
- **CSIP #11: Tree Planting**
This practice is addressed on page 14.
- **CSIP #12: Tree Recycling**
This practice is addressed on pages 10, 13.
- **CSIP #13: Sidewalk Maintenance Problem**
This practice is addressed on pages 14.
- **CSIP #14: Stormwater Management**
This practice is addressed on pages 14.

- **CSIP #15: Other**
This practice is addressed on pages 15.



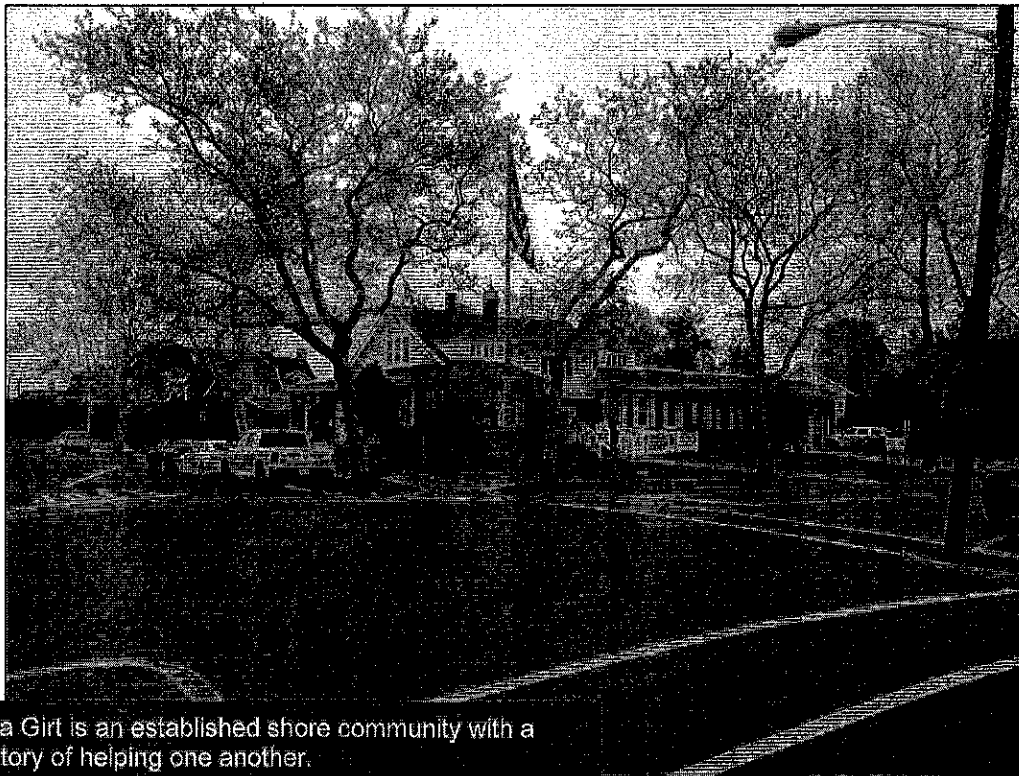
Sea Girt is one square mile but has many streets that are tree-lined and many that require trees to be planted to become tree lined.

Jared McKittrick
Director of Public Works

PLAN AMENDMENTS

This plan is based on objectives, knowledge and conditions that were valid at the time of development. However the Borough recognizes those conditions and needs may change over time and those portions of this plan may become outdated. Therefore, this plan may be amended using the following procedures.

- a) Amendments may be requested by any member of the community.
- b) Community Forestry Management Plan amendments shall be coordinated with the Shade Tree Commission.
- c) If deemed necessary by majority vote, the Shade Tree Commission shall draft changes for consideration by the Borough Council. Any proposed changes shall be submitted by the Shade Tree Commission to all advisory boards of Sea Girt Borough for review and comment prior to submission to the Borough Council for consideration.
- d) The revised Community Forestry Management Plan shall be submitted to the New Jersey Community Forestry Council for approval in accordance with the New Jersey Shade Tree and Community Forestry Assistance Act.



Sea Girt is an established shore community with a history of helping one another.

Mike Matthews
Chairman, Shade Tree Commission

SEA GIRT BOROUGH - COMMUNITY FORESTRY MANAGEMENT PLAN

SEA GIRT SHADE TREE COMMISSION
SEA GIRT, NEW JERSEY

REQUEST FOR SERVICE

Name: _____

Address: _____

Contact Person: _____ Phone: _____

E-mail: _____ Cell: _____

Fax: _____

WORK LOCATION(S)

STREET ADDRESS: _____

BLOCK #/LOT # (required) _____

Type of work requested under this application. Check all that apply:

- | | |
|-----------------------------------|---|
| <input type="checkbox"/> Removal | <input type="checkbox"/> Planting |
| <input type="checkbox"/> Trimming | <input type="checkbox"/> Stump grinding |
| <input type="checkbox"/> Pruning | <input type="checkbox"/> Other |

Other: Please explain in detail the scope of work requested:

All tree work including but not limited to: trimming, topping for removal, pruning, bracing and cabling, transplanting, planting and plant health care, must be performed in accordance with the latest revisions to NJCTE Board of Tree Experts Standards, ANZI Z-133.1 and A-300 Standards, OSHA and Vertical Standards for working in proximity to energized conductors.

All brush, limbs, logs and/or chips **MUST** be removed from site. Stumps **MUST** be cut or ground flush to ground level - **NO EXCEPTIONS**.

If tree planting is requested, species must be chosen from the approved list. The property owner acknowledges that he/she is responsible for watering new trees for at least one half hour (30 minutes) per day until the tree is established. Property owner acknowledges he is responsible for any sidewalk damage that may occur as the tree matures.

Signature of Owner or Authorized Representative

Approved: Signature of Shade Tree Commissioner

Date Submitted: _____ Date Approved: _____

-----FOR OFFICIAL USE ONLY-----

Reviewed by: _____

Special Conditions, if any _____

Appendix

Chapter 2 - Article 7: Boards, Committees and Commissions

2-46 SHADE TREE COMMISSION - Borough of Sea Girt

2-46.1 Creation; Appointment of Members.

Pursuant to N.J.S.A. 40:64-1 et seq., the regulation, planting, care and control of shade and ornamental trees and shrubbery upon and in the streets, highways, public places and parks and parkways of the Borough, except State highways, unless the State Highway Department shall assent thereto, and except County highways, parks and parkways, if a County Shade Tree Commission is operative and gives assent thereto, shall be exercised by and under the authority of the Borough of Sea Girt Shade Tree Commission, which is hereby created. The Commission shall consist of five (5) members appointed by the Mayor, who shall be residents of this Borough and shall serve without compensation except as hereinafter provided. (Ord. No. 343)

2-46.2 Terms of Office.

All appointments, except to fill vacancies, shall be for a term of five (5) years, to take effect on January 1 next succeeding the appointment. In event that the membership of the Commission is increased, the new members shall be appointed in such manner that the terms shall expire in successive years. (Ord. No. 343)

2-46.3 Organization Salaries.

The Commission shall organize annually by the election of one (1) of its members as Chairman, and the appointment of a Secretary, who need not be a member. The salary of the Secretary, who may be compensated even if a member of the Commission, shall be fixed by the Governing Body; the salary of all other employees shall be fixed by the Commission. All salaries shall be fixed as nearly as practicable in accordance with the salary ordinance of the Borough for corresponding positions. (Ord. No. 343)

2-46.4 Vacancies.

Any vacancy occurring by reason of the death, resignation or removal of any Commissioner shall be filled for the unexpired term by the Mayor or other chief executive of the Borough. (Ord. No. 343)

2-46.5 Powers and Commission.

The Shade Tree Commission shall have power to:

1. Exercise full and exclusive control over the regulations, planting and care of shade and ornamental trees and shrubbery now located, or which may hereafter be planted in any public highway and park or parkway, except such as are excluded pursuant to subsection 2-44.1, including the planting, trimming, spraying, care and protection thereof.
2. Regulate and control the use of the ground surrounding the same, so far as may be necessary for their proper growth, care and protection.
3. Move or require the removal of any tree or part thereof dangerous to public safety.
4. Make, alter, amend and repeal, in the manner prescribed for the passage, alteration, amendment and repeal of ordinances by the Governing Body of the Borough, any and all ordinances necessary or proper for carrying out the provisions hereof.

SEA GIRT BOROUGH - COMMUNITY FORESTRY MANAGEMENT PLAN

5. Administer treatment to, or remove, any tree situated upon private property which is believed to harbor a disease or insects readily communicable to neighboring healthy trees in the care of this Borough and enter upon private property for that purpose with the consent of the owner thereof, provided the suspected condition is first confirmed by certificate issued by or on behalf of the New Jersey Department of Agriculture.

6. Encourage arboriculture.
(Ord. No. 343)

Chapter 13 Property Maintenance

13-2.2 Height of Tree over Curbs or Sidewalks.

No owner, tenant or occupant of a dwelling or land in the Borough shall plant, grow, keep or maintain, or permit to be planted, grown, kept or maintained upon the curb-line of any street or upon or over the sidewalks or footwalks of the Borough, any trees or shrubbery, the limbs, branches or foliage of which shall be less than eight (8) feet above the sidewalks or footwalks.
(Ord. No. 838 § 2)

Sea Girt Borough
Department of Public Works
Jared McKittrick, DPW Supervisor
PH: 732 449 6463 email: publicworks@seagirtboro.com
2016 Trees Approved for Apron Planting

Approval is required for any planting between curb and sidewalk

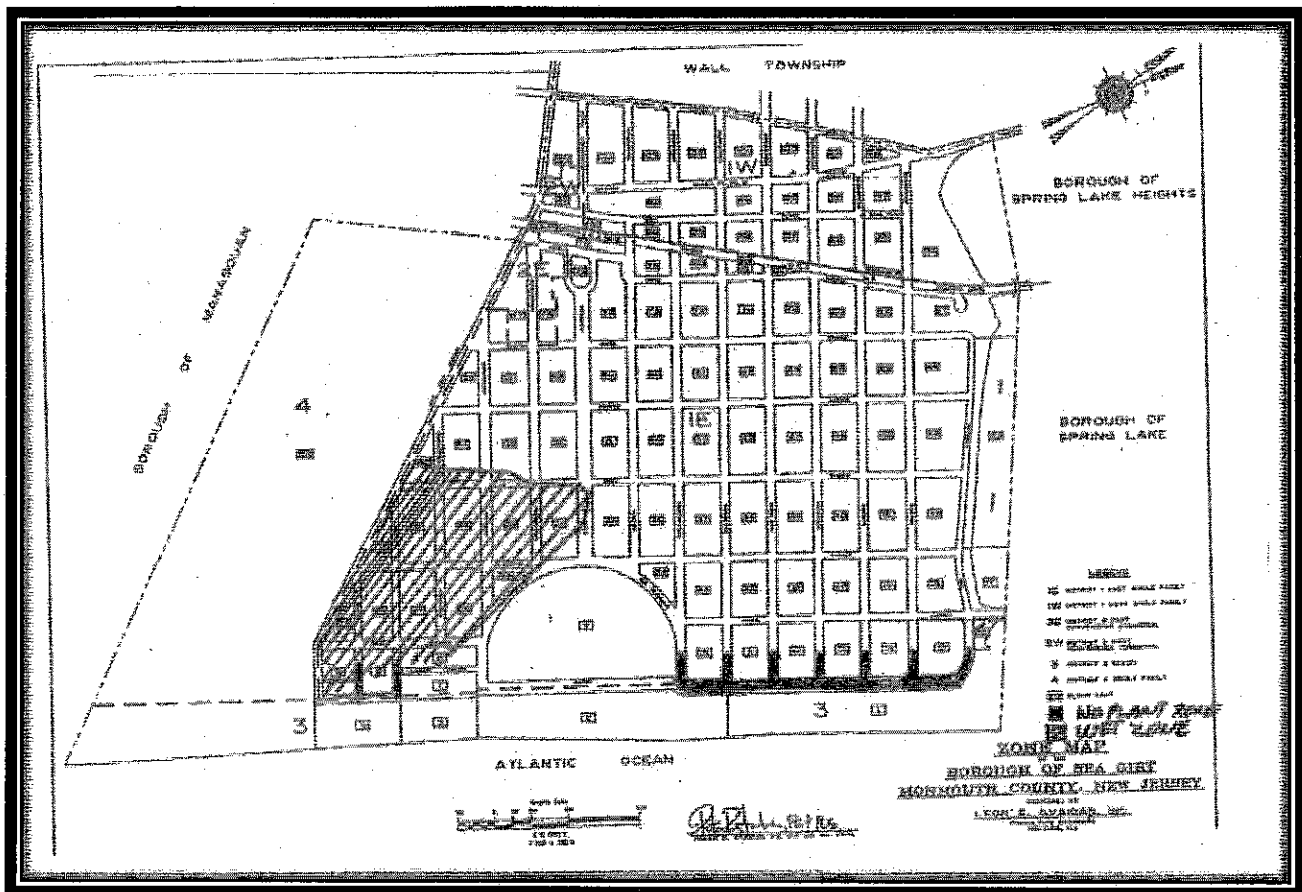
<u>Latin/Botanical Name</u>	<u>Common Name</u>	<u>Estimated Mature Height</u>
<i>Small trees for under wires</i>		
Amelanchier Arborea	Downey Serviceberry	15-20 Feet
Halesia Carolina Cultivar	Carolina Silverbell	20-25 Feet
Lagerstroemia	Crepe Myrtle (single stem)*	15-20 Feet
Maackia Amurensis	Amur Maackia	20-30 Feet
Styrax Japonica	Japanese Snowbell/Styrax	20-30 Feet
Syringa Reticulata	Tree Lilac "Ivory Silk"	20-30 Feet
<i>Large trees for no wires</i>		
Carpinus Betulus	European Hornbeam	40-60 Feet
Cercidiphyllum Japonicum	Katsura Tree	40-60 Feet
Ginkgo Biloba	Princeton Sentry Maidenhair	50-60 Feet
Platanus Acerifolia	Bloodgood London Planetree	70-90 Feet
Quercus Acutissima	Sawtooth Oak	40-70 Feet
Quercus Alba	White Oak	60-100 Feet
Quercus Palustris Cultivar	(Green Pillar) Pin Oak	60-80 Feet
Quercus Phellos	Willow Oak	50-80 Feet
Quercus Robur	"Rosehill" English Oak	40-60 Feet
Quercus Rubra	Red Oak	40-90 Feet
Sophora Japonica	Regent Scholar Tree	40-50 Feet
Taxodium Distichum	Bald Cypress	50-70 Feet
Tilia Cordata Cultivar	Little Leaf Linden	30-50 Feet

Notes:

1. Trees to be 2-2 ½ Inches in diameter
2. Trees to be high branched
3. Tree location to be clear of underground and above ground utility lines
4. Location approved by Shade Tree Commission and/or Public Works
5. Trees to be nursery grown and free of disease and insects.

*Approved but not available for Borough Planting.

Sea Girt - No Planting (Wet) Zones



All Borough Codes Related to Trees

<u>#</u>	<u>Document</u>	<u>Location</u>	<u>Sort</u>
1	CHAPTER II ADMINISTRATION	Borough Code	100%
2	CHAPTER III POLICE REGULATIONS	Borough Code	50%
3	CHAPTER XIII PROPERTY MAINTENANCE	Borough Code	75%
4	CHAPTER XXI STREETS AND SIDEWALKS	Borough Code	75%
5	CHAPTER XXIII WATER	Borough Code	75%
6	CHAPTER XXV CABLE TELEVISION	Borough Code	75%
7	CHAPTER XVI LAND SUBDIVISION	Land Use Volume	75%
8	CHAPTER XVII ZONING	Land Use Volume	50%
9	CHAPTER XVIII SITE PLAN REVIEW	Land Use Volume	50%