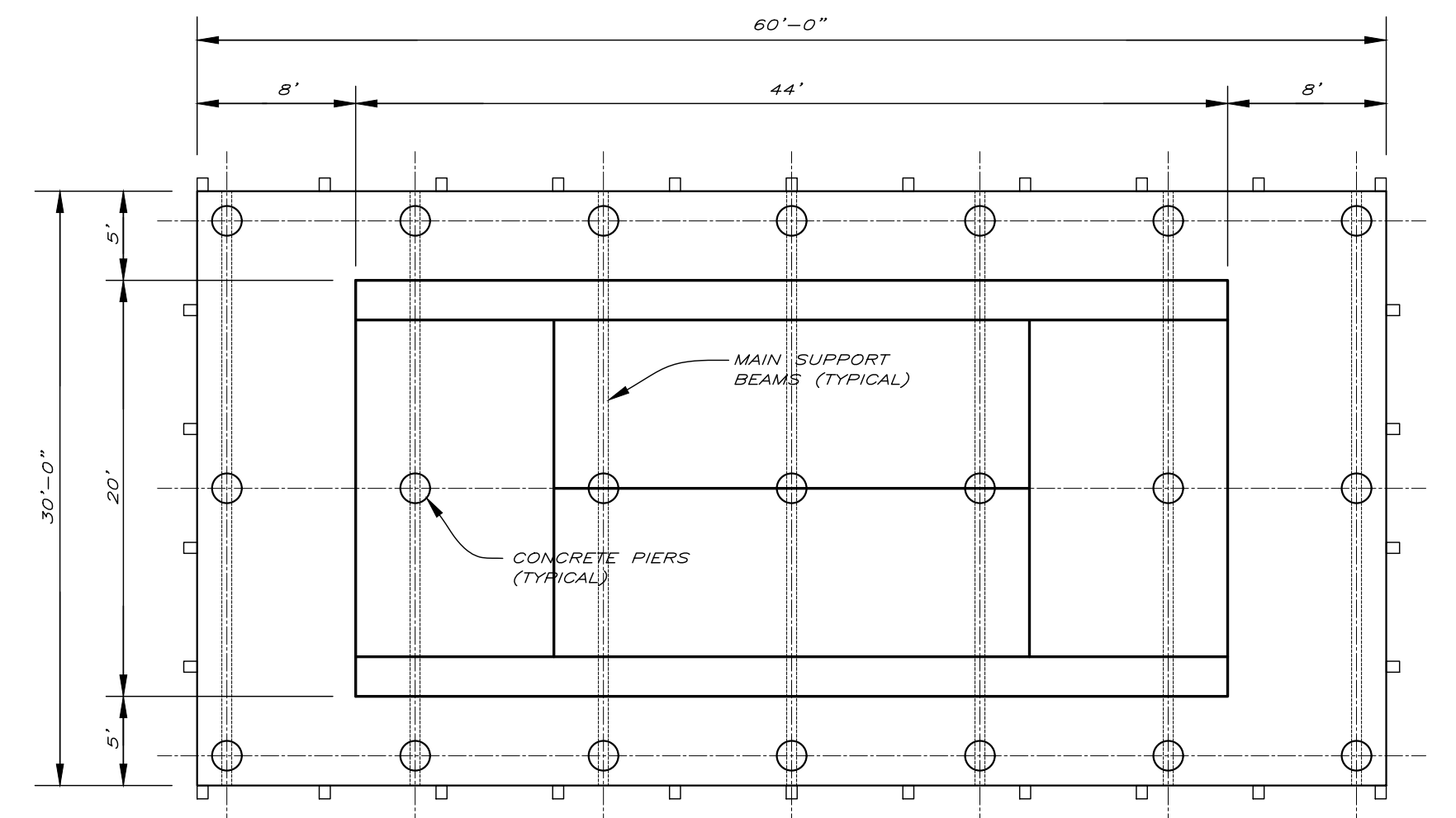
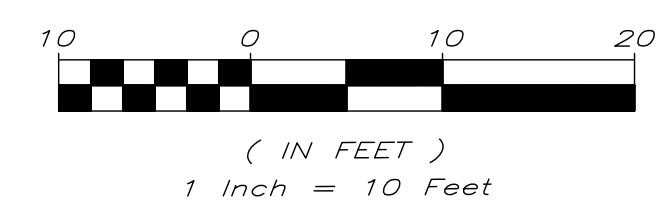


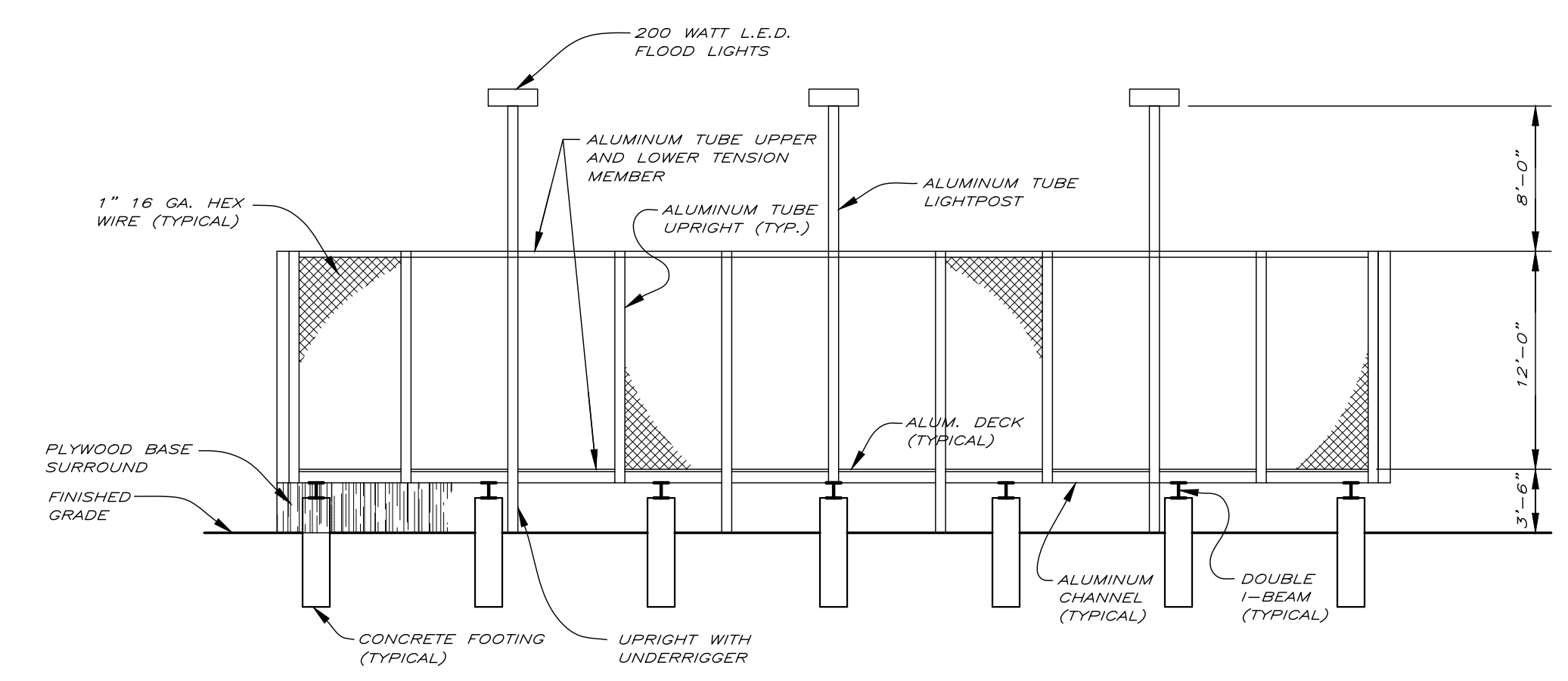
PLAN VIEW
Scale 1"=10'

NOTE:
CONTRACTOR TO FIELD VERIFY GAS AND ELECTRIC SERVICES TO EXISTING PLATFORM TENNIS COURT PRIOR TO CONSTRUCTION.

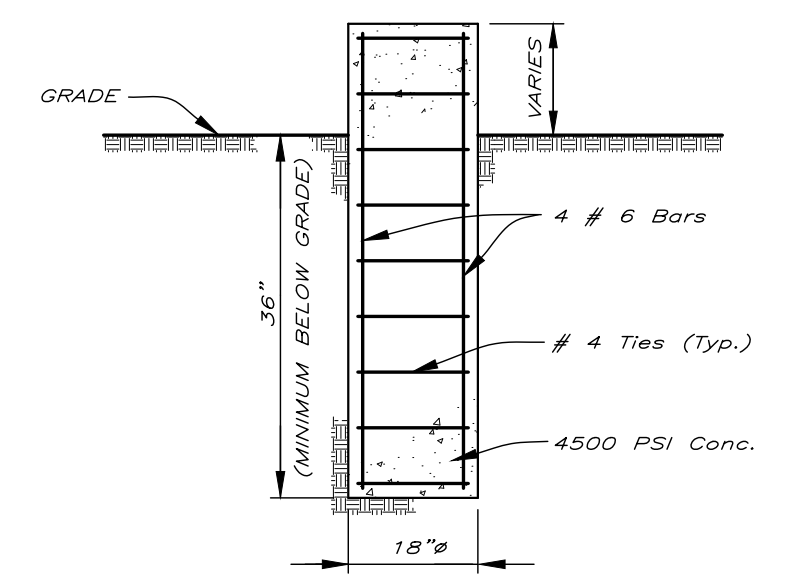
- LEGEND**
- INDICATES LOCATION AND SIZE OF EXISTING TREE. MINIMUM TREE SIZE 2" OR GREATER.
 - INDICATES TREE TO BE REMOVED BY OTHERS
 - ALL TREES ARE HOLLY TREES UNLESS NOTED.
 - INDICATES EXISTING GRADE
 - INDICATES PROPOSED GRADE



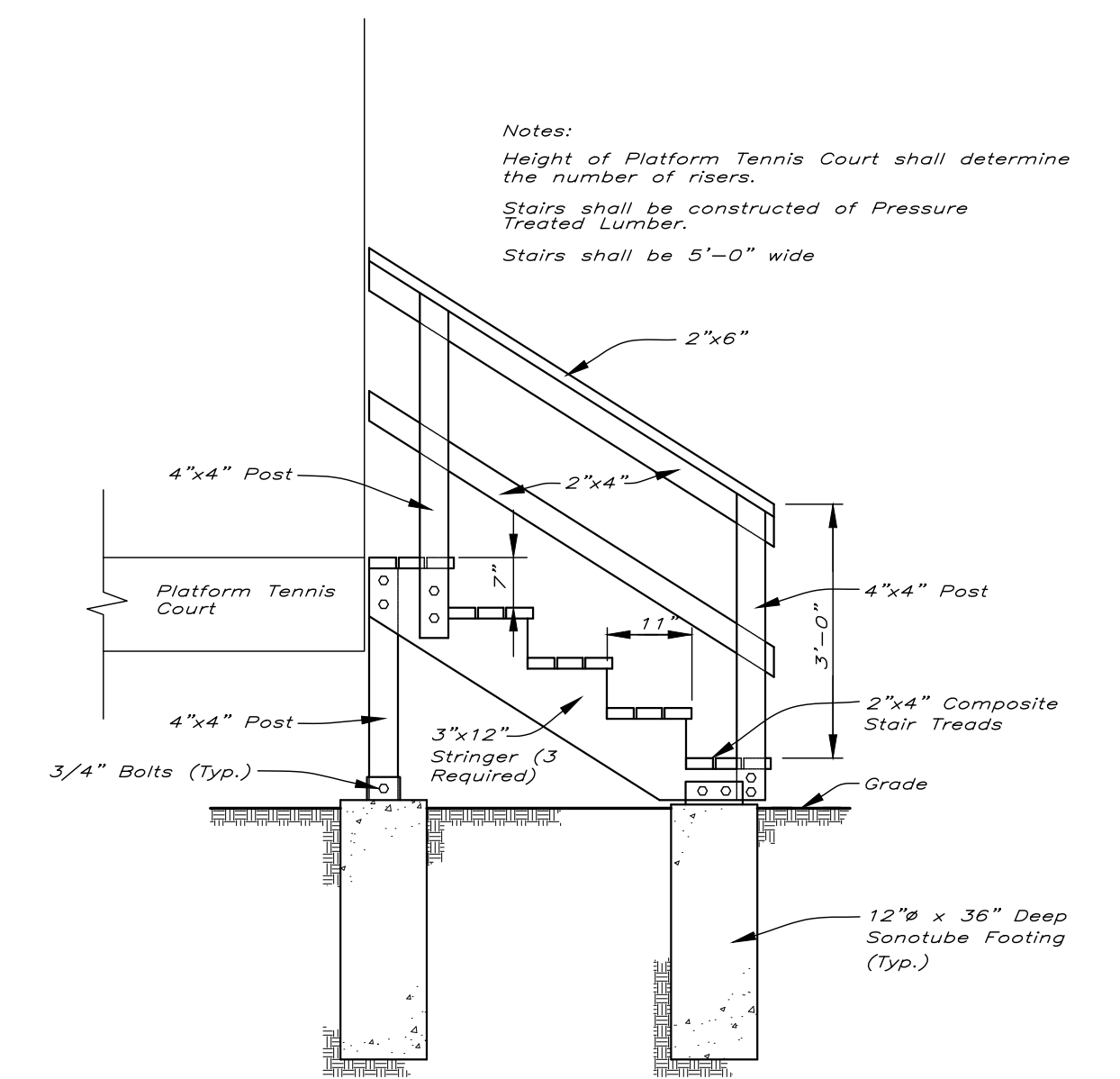
COURT PLAN
SCALE 1/8"=1'-0"



COURT ELEVATION
SCALE 1/8"=1'-0"



COURT SONOTUBE FOOTING DETAIL
NOT TO SCALE



WOOD STAIR DETAIL
No Scale

 LEON S. AVAKIAN, INC. <i>Consulting Engineers</i> 788 WAYSIDE ROAD NEPTUNE, NEW JERSEY 07753 OFFICE: (732) 922-9229 FAX: (732) 922-0044	BOROUGH OF SEA GIRT				
	PLATFORM TENNIS COURT CONSTRUCTION				
	LOCATED AT CRESCENT PARK IN THE BOROUGH OF SEA GIRT, MON. CO., N.J.				
SCALE As Shown	DATE Jan. 4, 2022	DRAWN BY L.P.C.	CHECKED P.R.A.	JOB NO. SG 21-13	SHEET 2 of 3
DAËTE					