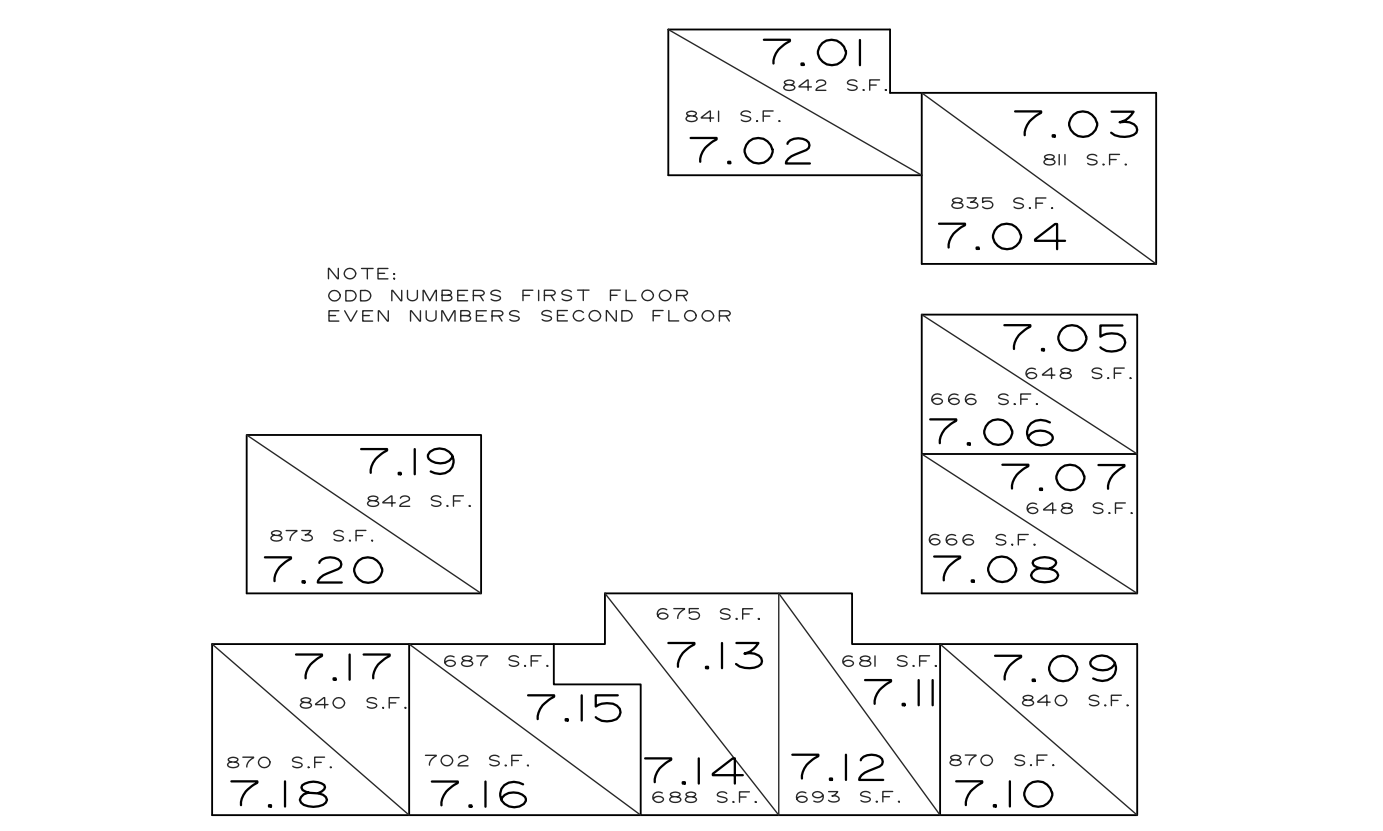
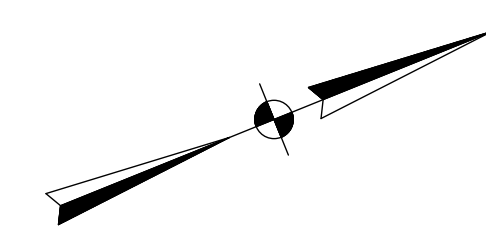
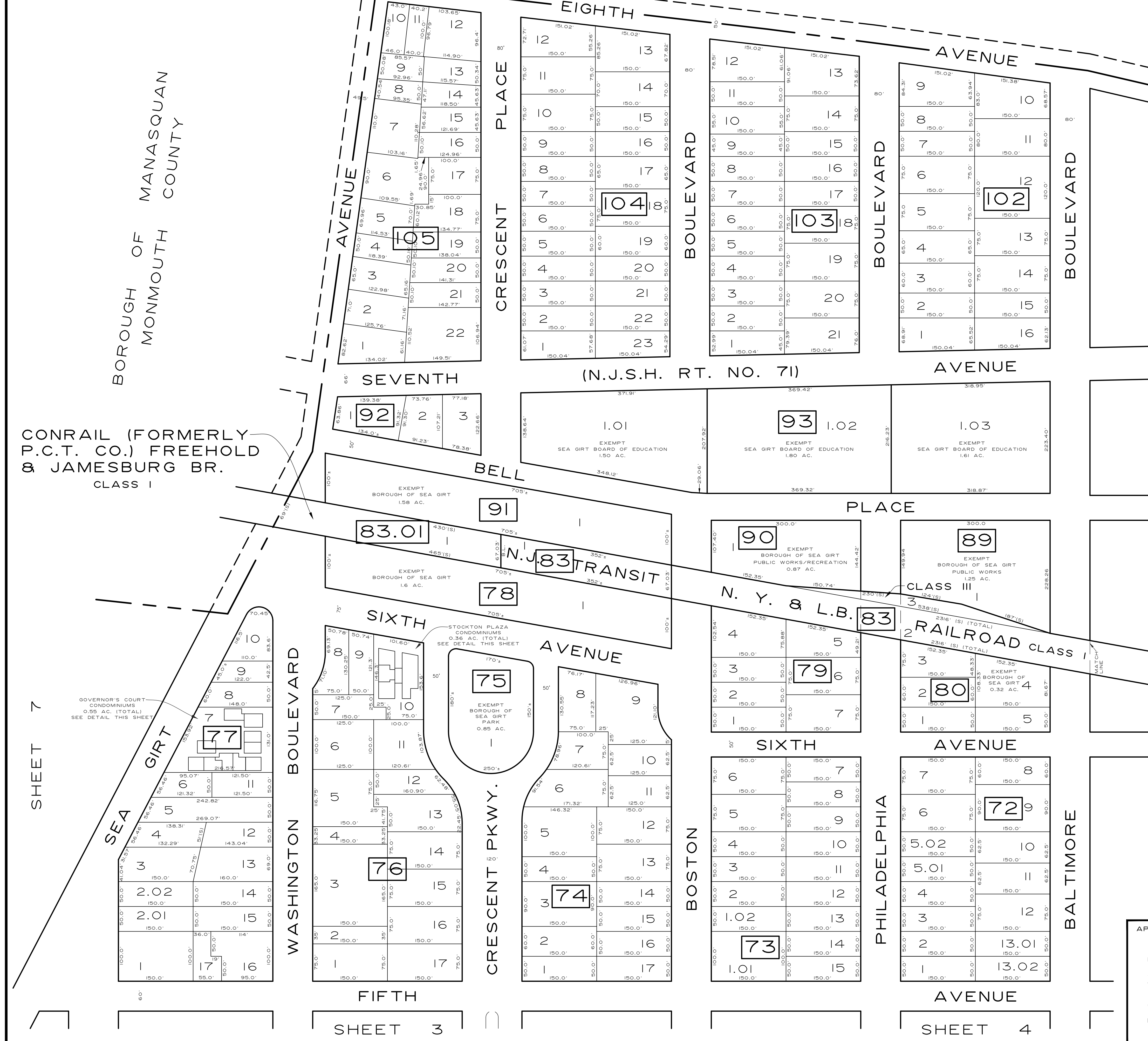
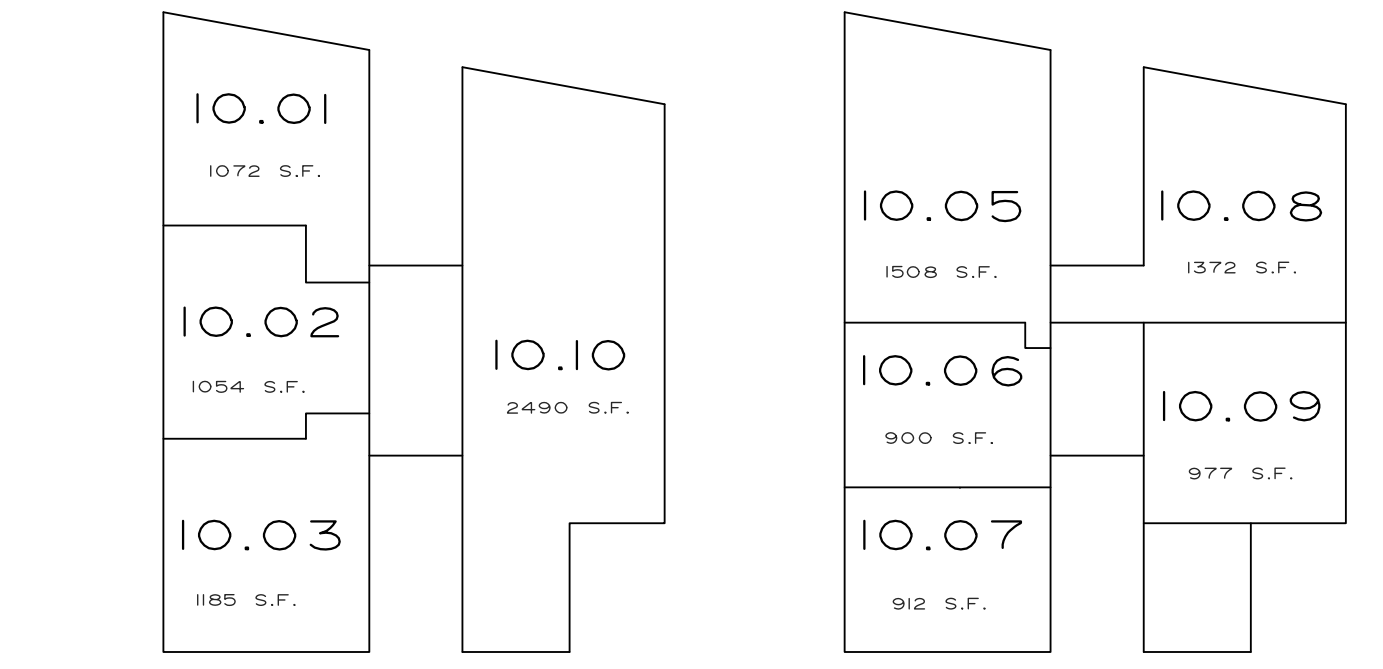


REVISIONS		
DATE	NAME	LIC. NO.
1-13-11	PETER R. AVAKIAN, PLS	28142
11-12-13	PETER R. AVAKIAN, PLS	28142
12-14-17	PETER R. AVAKIAN, PLS	28142



GOVERNOR'S COURT CONDOMINIUMS
SCALE: 1" = 30'



FIRST FLOOR SECOND FLOOR
STOCKTON PLAZA CONDOMINIUMS
SCALE: 1" = 30'

THIS SHEET IS A SCANNED COPY OF THE TAX MAP ORIGINALLY PREPARED BY WILSON HOPKINS, L.S., DECEMBER 1966. THE ORIGINAL APPROVED MAP IS ON FILE IN THE OFFICE OF THE ENGINEER, LEON S. AVAKIAN, INC., NEPTUNE, NJ.

APPROVED BY NJ DEPARTMENT OF THE TREASURY
DIVISION OF TAXATION
PROPERTY ADMINISTRATION
JAMES C. COLL, CTA
CHIEF, LOCAL ASSESSMENT COMPLIANCE
SANTO C. DIDONATO, CTA
SUPERVISING FIELD REPRESENTATIVE
DATE: MAY 25, 2004
SERIAL NO. 834

TAX MAP
BOROUGH OF SEA GIRT
MONMOUTH COUNTY NEW JERSEY
SCALE: 1"=100' MAY, 2003
PETER R. AVAKIAN, P.E. & L.S.
BOROUGH ENGINEER
788 WAYSIDE ROAD
NEPTUNE, N.J.
TO SHOW CONDITIONS AS OF NOV. 12, 2013

SHEET 7

SHEET 3

SHEET 4

SHEET 5