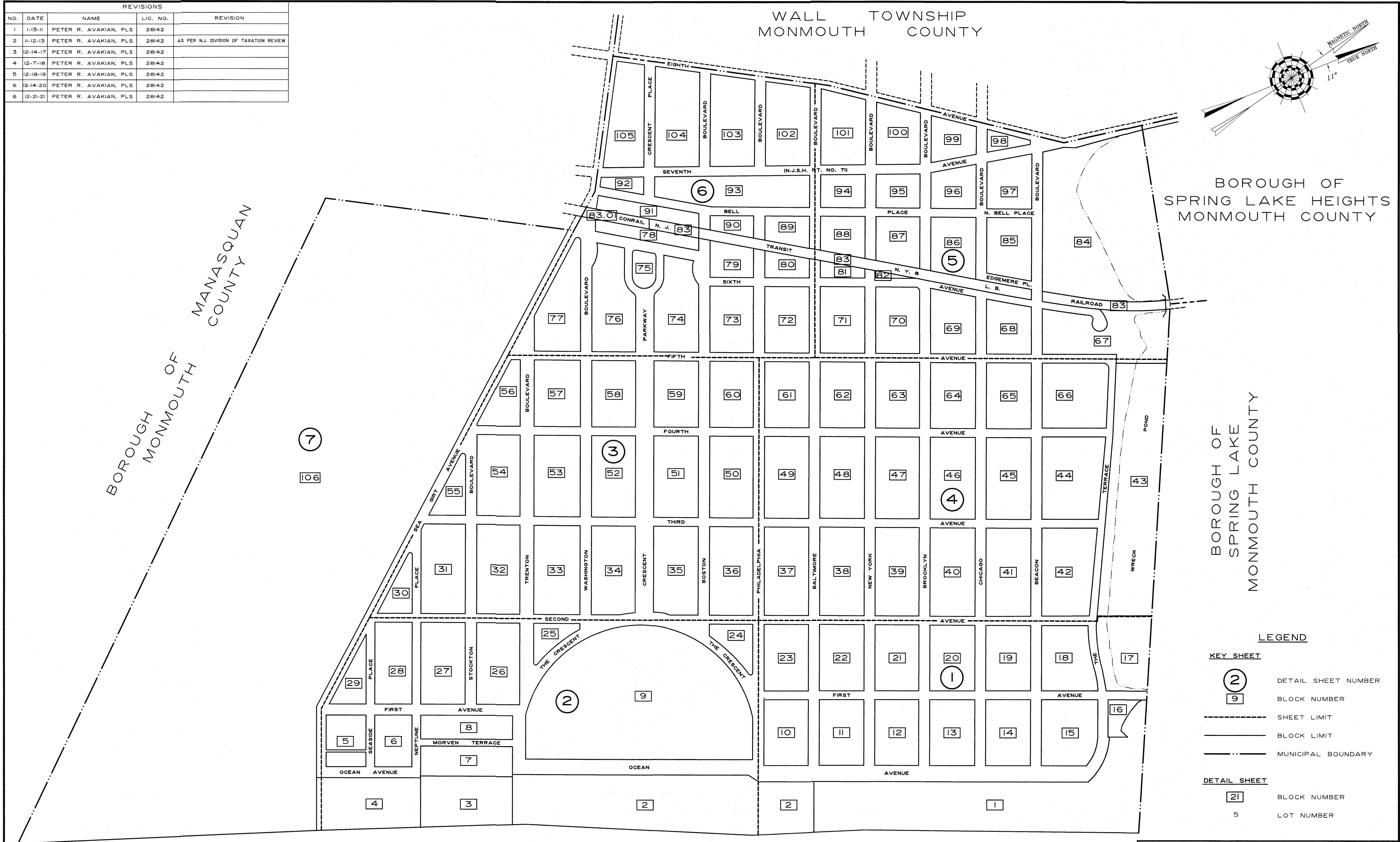


REVISIONS				
NO.	DATE	NAME	LIC. NO.	REVISION
1	1-13-11	PETER R. AVAKIAN, PLS	28142	
2	11-12-13	PETER R. AVAKIAN, PLS	28142	AS PER N.J. DIVISION OF TAXATION REVIEW
3	12-14-17	PETER R. AVAKIAN, PLS	28142	
4	12-7-18	PETER R. AVAKIAN, PLS	28142	
5	12-18-19	PETER R. AVAKIAN, PLS	28142	
6	12-14-20	PETER R. AVAKIAN, PLS	28142	
6	12-21-21	PETER R. AVAKIAN, PLS	28142	



THIS SHEET IS A SCANNED COPY OF THE TAX MAP ORIGINALLY PREPARED BY WILSON HOPKINS, L.S., DECEMBER 1966. THE ORIGINAL APPROVED MAP IS ON FILE IN THE OFFICE OF THE ENGINEER, LEON S. AVAKIAN, INC., NEPTUNE, NJ.

THE AREAS, BOUNDARIES AND DIMENSIONS SHOWN ON THIS TAX MAP ARE DERIVED FROM GROUND SURVEYS, AERIAL SURVEYS, AND RECORDED PLANS, MAPS, DEEDS, AND WILLS, AND ARE TO BE USED FOR ASSESSMENT PURPOSES ONLY.

THIS TAX MAP SUPERSEDES THE TAX MAP APPROVED APRIL 23, 1918.

I HEREBY CERTIFY THAT THIS MAP HAS BEEN REVISED UNDER MY IMMEDIATE SUPERVISION, AND COMPLIES WITH THE LAWS OF THE STATE OF NEW JERSEY.

PETER R. AVAKIAN, PLS NJ LIC. NO. 28142

APPROVED BY NJ DEPARTMENT OF THE TREASURY

DIVISION OF TAXATION PROPERTY ADMINISTRATION

JAMES C. COLL, CTA CHIEF, LOCAL ASSESSMENT COMPLIANCE

SANTO C. DIDONATO, CTA SUPERVISING FIELD REPRESENTATIVE

DATE: MAY 25, 2004

SERIAL NO. 834

**TAX MAP**  
**BOROUGH OF SEA GIRT**  
**MONMOUTH COUNTY NEW JERSEY**  
**SCALE : 1"=300'**  
**MAY, 2003**  
**PETER R. AVAKIAN, P.E. & L.S.**  
**BOROUGH ENGINEER**  
**788 WAYSIDE ROAD**  
**NEPTUNE, N.J.**  
**TO SHOW CONDITIONS AS OF NOV. 12, 2013**